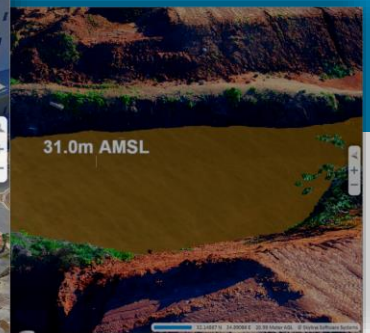
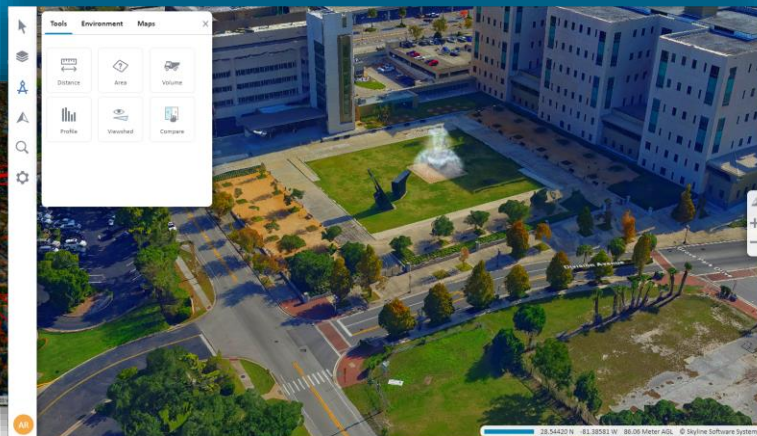
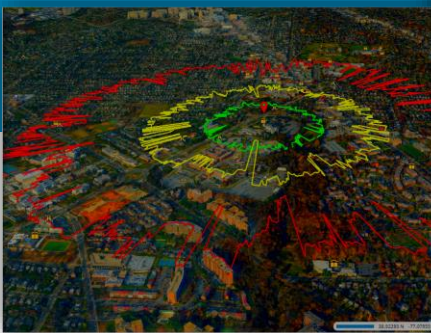


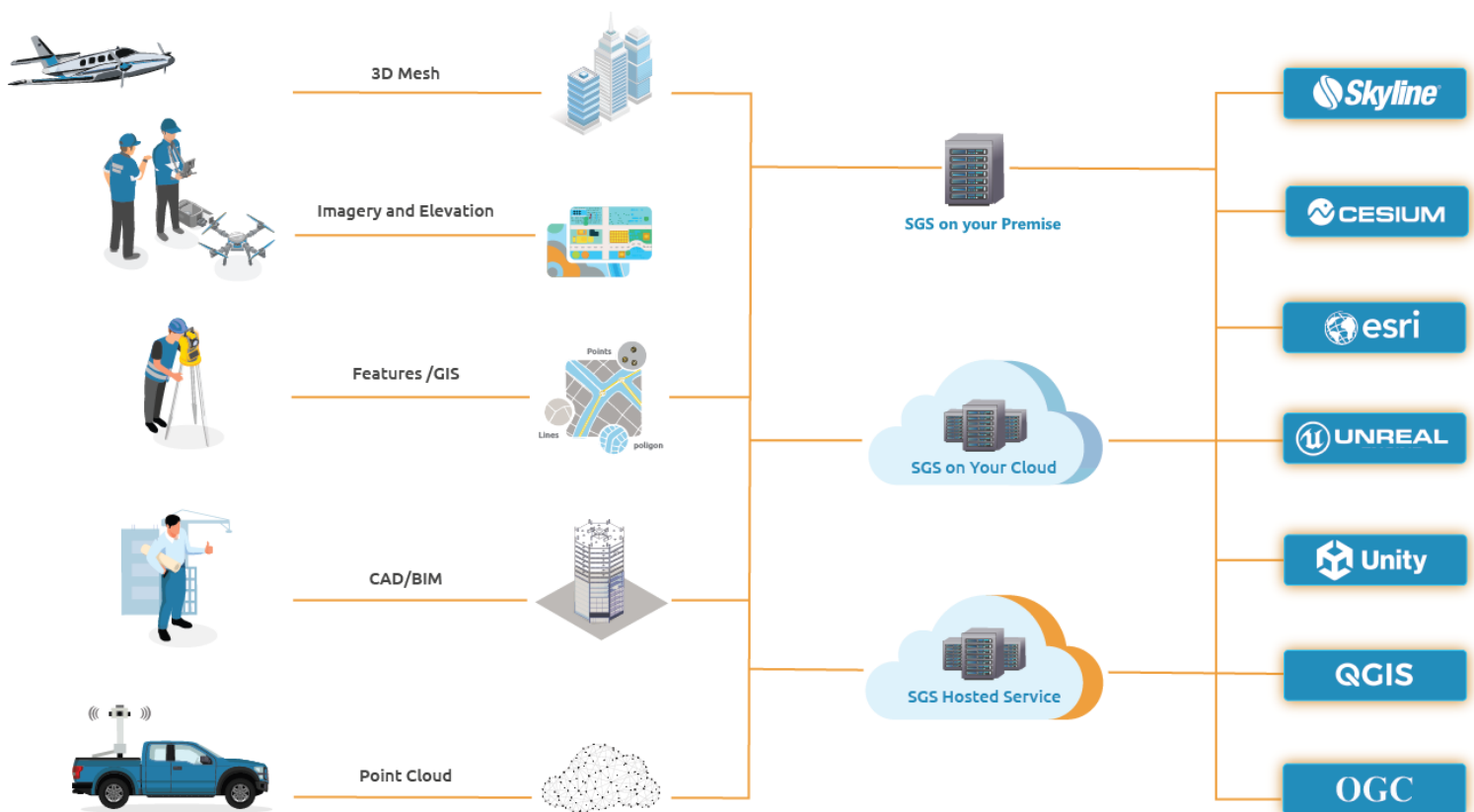
SkylineGlobe Server

Release Notes

V 8.1



SkylineGlobe Server is a private cloud solution that provides a comprehensive set of web services for publishing, storing, managing and streaming 3D spatial data. All your spatial data types can be streamed including imagery (MPT/TBP/WMS/WMTS), elevation (MPT/TBP/WMS/WMTS), feature (WFS/WFS-T), 3D Mesh (3DML, OGC 3D Tiles, Esri I3S/SLPK), point cloud (CPT, OGC 3D Tiles), project files and other resources. Through a single publishing operation, data is made ready for consumption by all TerraExplorer clients: Desktop, Web and Mobile, as well as other geospatial applications including Esri, QGIS and Cesium-based viewers.



TerraExplorer Fusion Plus License Option

Every SGS installation includes the capability to upgrade to TerraExplorer Fusion Plus level. This upgrade occurs dynamically in TerraExplorer Fusion when a project is accessed from a SkylineGlobe server with an active Plus license. The Plus license grants Plus capabilities across the server, while allowing for the selective restriction of certain sites to Viewer-only mode.

Key features in TerraExplorer Fusion Plus include:

- Advanced analysis tools
- Load and style layers
- Drawing tools
- Feature layer editing option
- Publish and share projects

Stability and Bug Fixes

- **Layer Naming Security:** Resolved an issue where layer names containing a dot as a delimiter failed to load due to security restrictions.
- **Cloud Publishing:** Fixed a bug that prevented publishing to SkylineGlobe Cloud for projects with extremely large Photo Inspector datasets.
- **SQLite Feature Layer Bug:** Corrected an issue where editing an SQLite feature layer in TEF corrupted the FLY file, resulting in features not appearing on the terrain.
- **SSO Login Failure:** Resolved a problem causing SSO login failures for users with SG Cloud accounts enabled (SG Cloud User = True).
- **File System Security Enhancement:** Addressed a critical security vulnerability in the project publishing system, where previously, users could manipulate resource URLs to access and download unauthorized server files.
- **Login Issues:** Addressed specific cases where login attempts failed, improving reliability.
- **GTX File Updates:** Updated GTX files to ensure compatibility and performance.
- **Database Compatibility:** Fixed a bug preventing TEF from loading feature layers from Oracle and PostgreSQL data sources.

REQUIREMENTS - SKYLINEGLOBE SERVER

Hardware Requirements

System Memory	8 GB RAM (16 GB or more recommended)
Processor	4 cores (8 or 16 cores recommended)

SkylineGlobe Server

Operating System	Windows Server 2016 / 2019 / 2022 (64-bit)
User Privileges	Administrator privileges required for installation and configuration
Additional Software	Microsoft IIS8.5, IIS10 with Net 4.8 and ASP.Net

SkylineGlobe Server Edge

Operating System	Windows 10 / 11 , Windows Server 2019 / 2022
User Privileges	Administrator privileges required for running the service

SkylineGlobe Server for Linux

Operating System	Ubuntu
Additional Software	Wine v7 and up, .Net 4.8

For additional information, check out the [SkylineGlobe Server](#) section and [TerraExplorer Fusion](#) section of our knowledge base.



www.skylinesoft.com

Copyright © 2024 Skyline Software Systems Inc. All rights reserved. Skyline, SkylineGlobe, the Skyline logo, TerraExplorer and the TerraExplorer logo are trademarks of Skyline Software Systems Inc.

