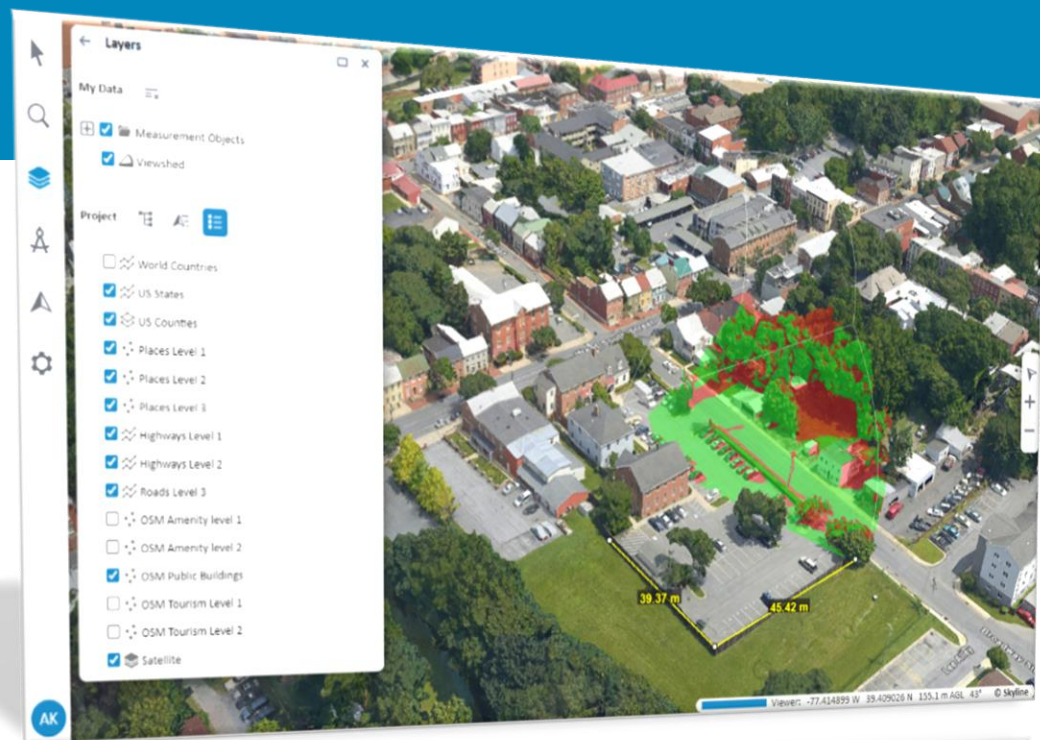
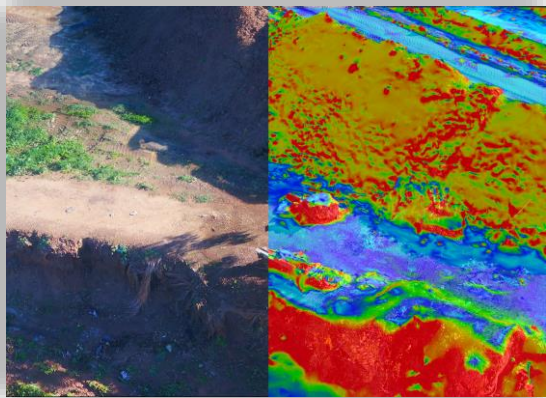


TerraExplorer Fusion Release Notes v8.1





- Overview
- TerraExplorer Fusion Plus
- Photo Inspector
- Viewshed Query
- Cross Section
- Clear Path
- High and Low
- Add Layers from Server
- Edit Layer's Style
- Drawing Tools
- Publish and Share
- Feature Query and Editing
- Google Earth 3D Tiles



TerraExplorer Fusion Plus

Every installation includes the capability to upgrade to TerraExplorer Fusion Plus level. This upgrade occurs dynamically in TerraExplorer Fusion when a project is accessed from a SkylineGlobe server with an active Plus license. The Plus license grants Plus capabilities across the server, while allowing for the selective restriction of certain sites to Viewer-only mode.

Key Features

- Advanced analysis tools
- Load and style layers
- Drawing tools
- Feature layer editing option
- Publish and share projects

Advanced Analysis Tools

The enhanced features included in the Fusion Plus toolset bolster TerraExplorer Fusion's analysis capabilities significantly, rendering them nearly on par with those of TerraExplorer Desktop.

Viewer

- ✓ Distance Measurement
- ✓ Area Measurement
- ✓ Volume
- ✓ Terrain Profile
- ✓ Comparison
- ✓ Viewshed
- ✓ Shadow
- ✓ Contour Map
- ✓ Slope Map

Plus

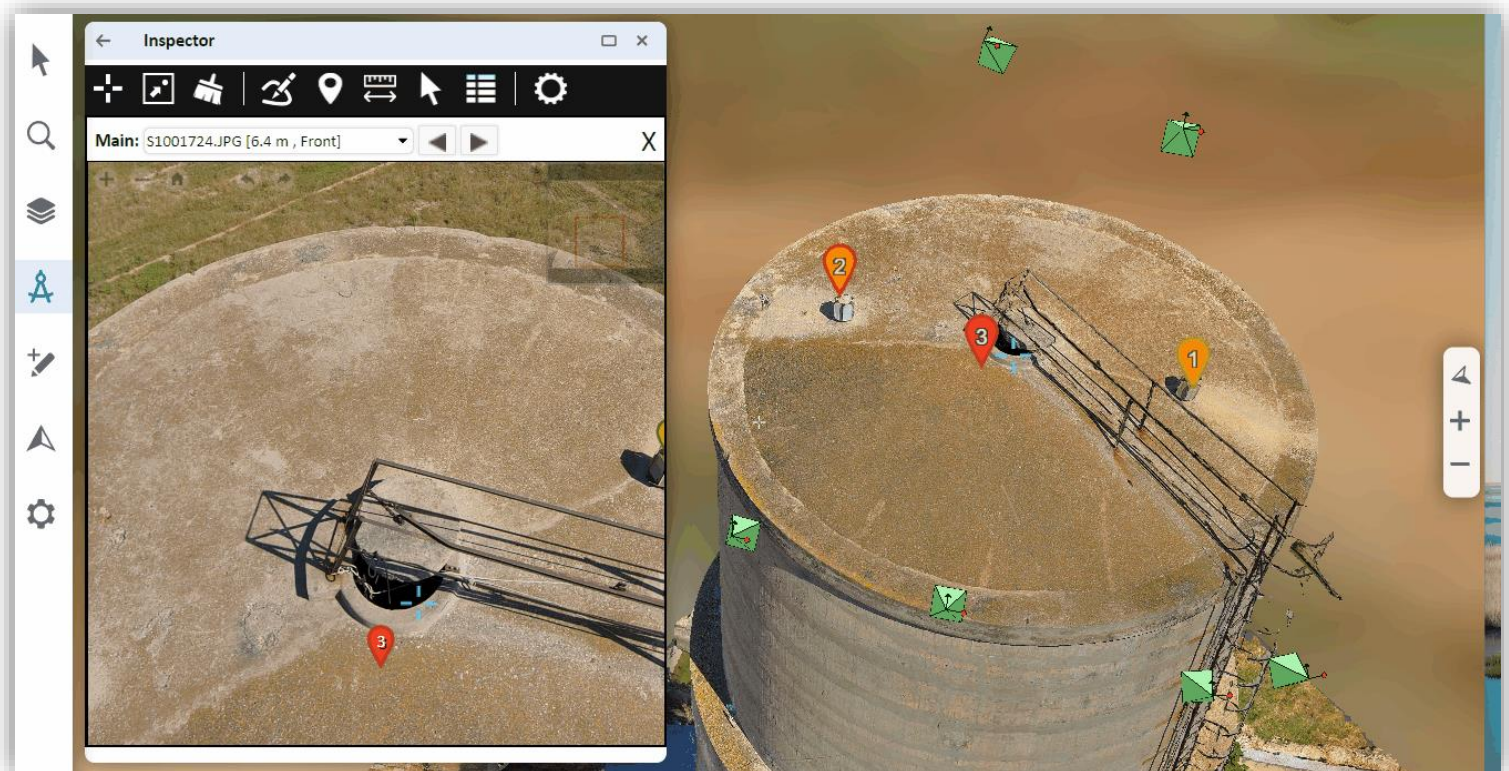
- ✓ All the Viewer tools
- ✓ Photo Inspector
- ✓ Viewshed Query
- ✓ Cross Section
- ✓ Clear Path (*)
- ✓ High and Low (*)

(*) turned off by default

Photo Inspector

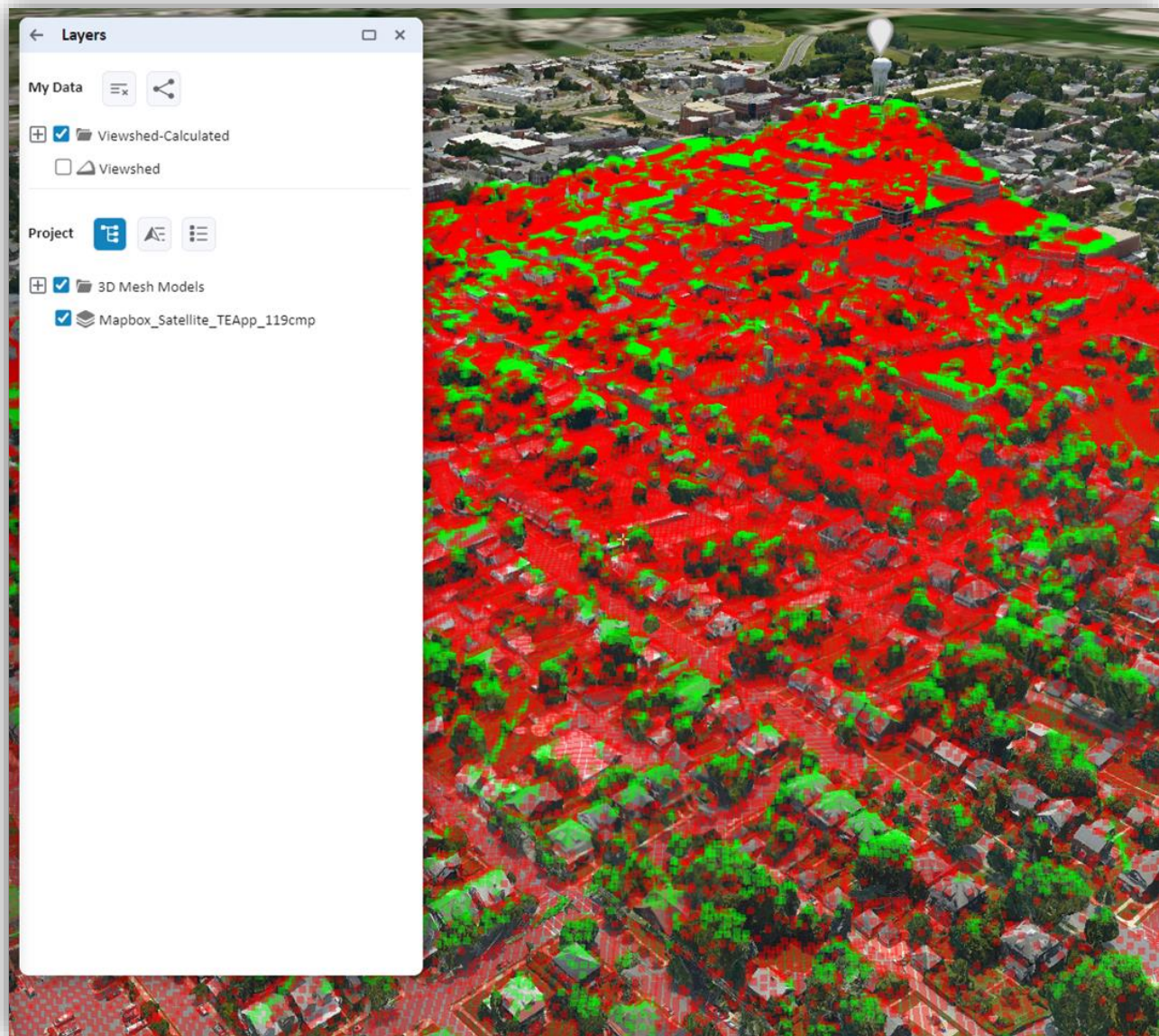
View and inspect your PhotoMesh 3D models (tower, bridge, construction site, etc.) from within TerraExplorer Fusion, together with the source photos used to produce them. After setting an inspection point, the Photo Inspector tool displays the photos used to generate this section of the model. You can easily navigate within the model and between the model and its associated photos.

Using the Photo Inspector tool, you can also use inspection feature layers in which you mark and measure areas in your 3D model or on photos in the Photo Inspector.



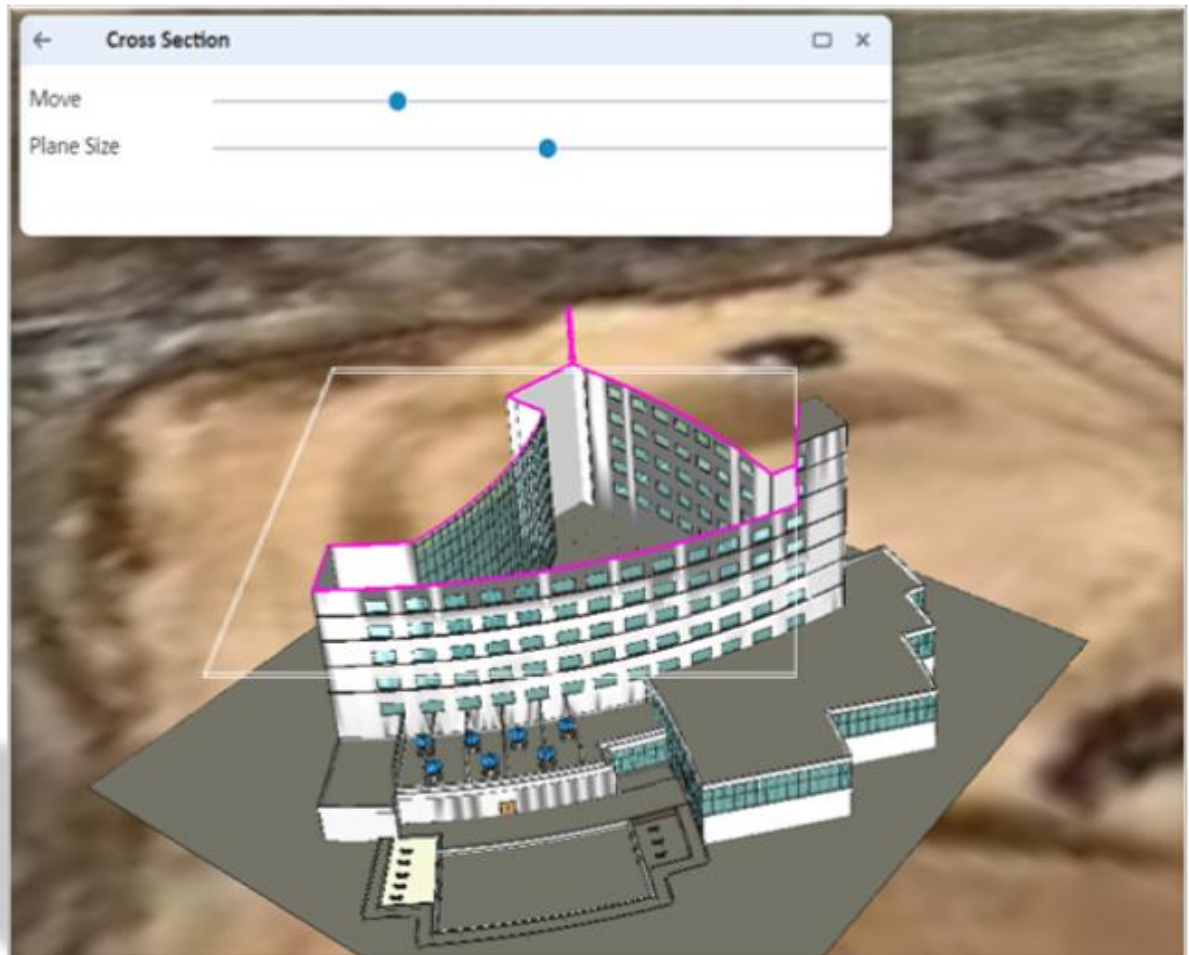
Viewshed

TerraExplorer Fusion Plus extends the preview viewshed capabilities of Fusion Viewer, offering the capability to also calculate viewsheds. The tool is designed to strike a balance between resource optimization and accuracy, ensuring that visibility analyses are both highly precise and computationally efficient.



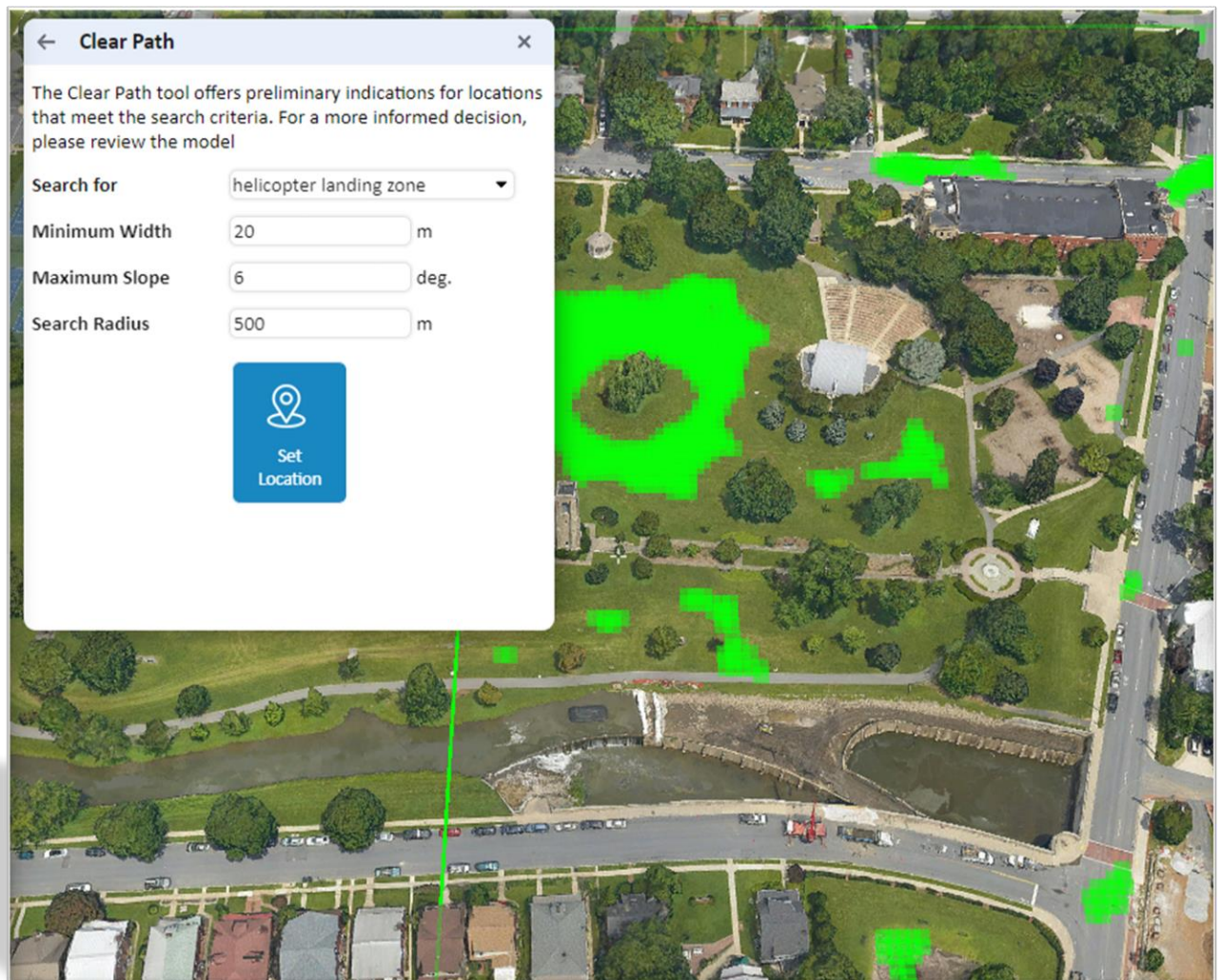
Cross Section

Make horizontal or vertical straight cuts to reveal hidden sections within the 3D View. With the Cross Section tool, you can uncover the internal components of BIM and 3D mesh models, as well as slice through LiDAR point cloud models to visualize different profiles of the model.



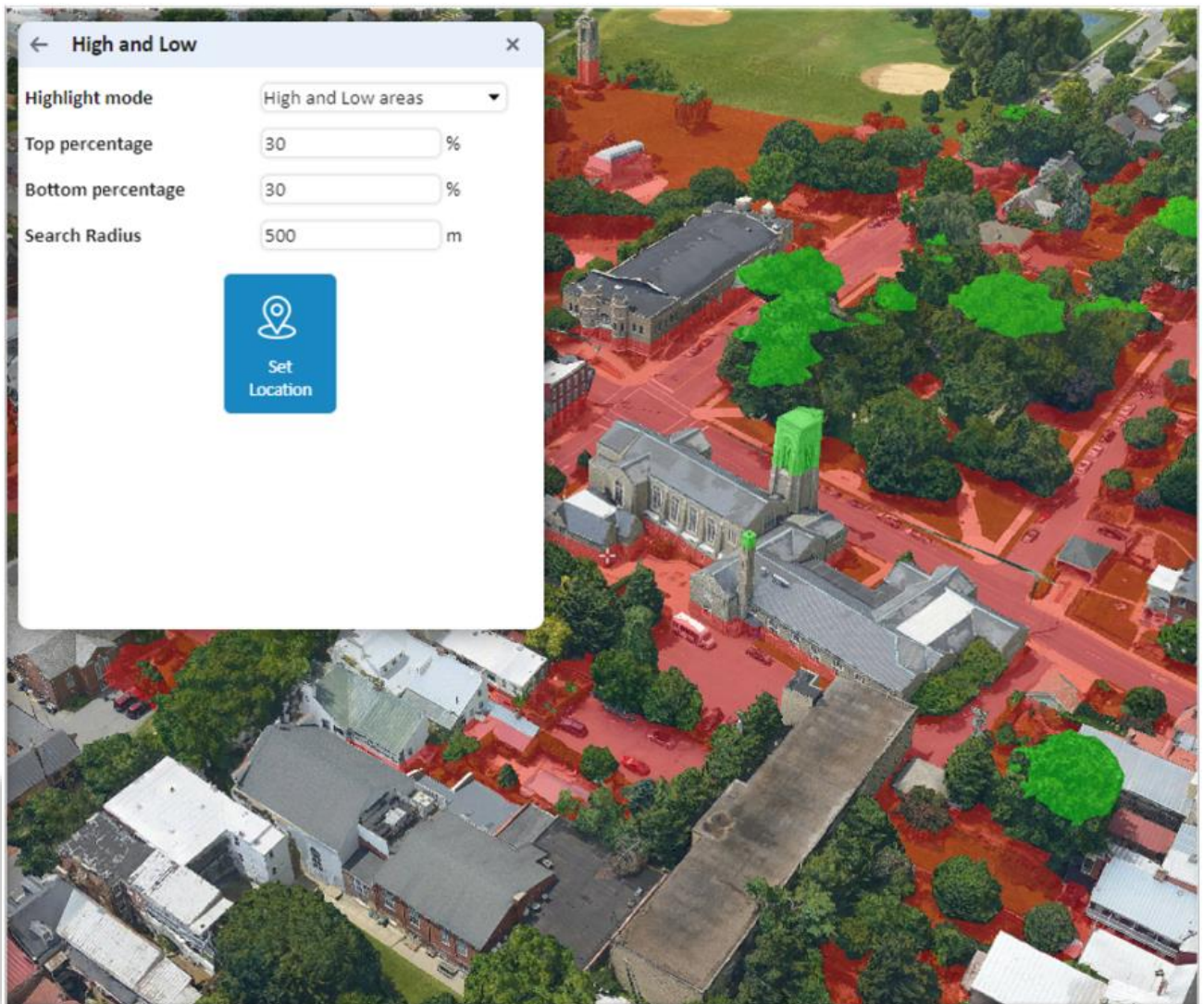
Clear Path

A navigational aid that enables users to identify ideal locations for specific purposes, such as helicopter landing zones or vehicular routes. This tool provides initial suggestions based on user-defined criteria within a specified search radius.



High and Low

This tool visually represents elevation differences within a selected area by coloring the highest and lowest regions based on user-specified percentage thresholds. For instance, setting a top percentage of 15% and a bottom percentage of 10% will cause the tool to highlight the uppermost 15% and the lowermost 10% of the area, clearly delineating these elevation extremes.



Load and Style Layers

TerraExplorer Fusion Plus allows for loading of all layer types from SkylineGlobe Server—3DML, elevation, feature, imagery, point cloud, or raster complex. A variety of styling options are also supported including line and fill color, altitude options, tooltips and more.

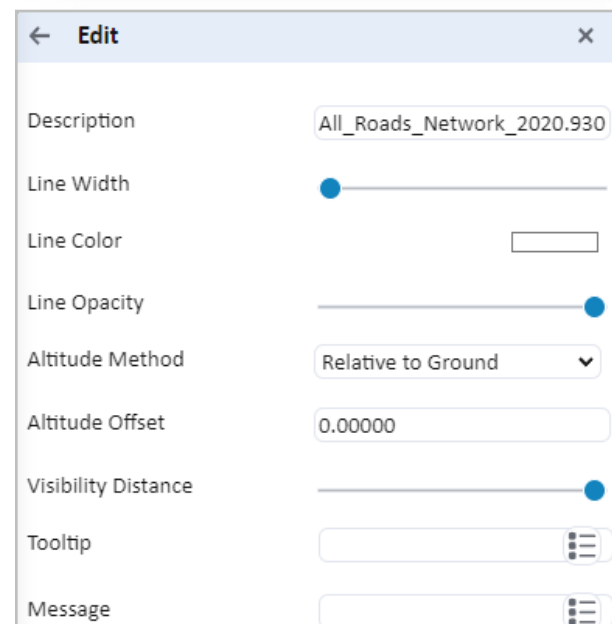
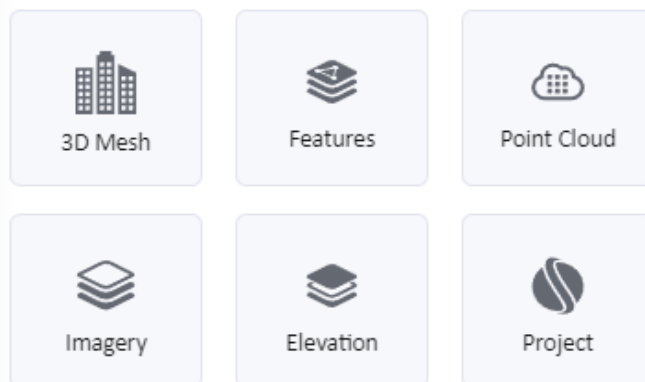
Formats

- 3D Mesh
- Feature
- Point Cloud
- Imagery
- Elevation
- Project (.Fly)

Styling options

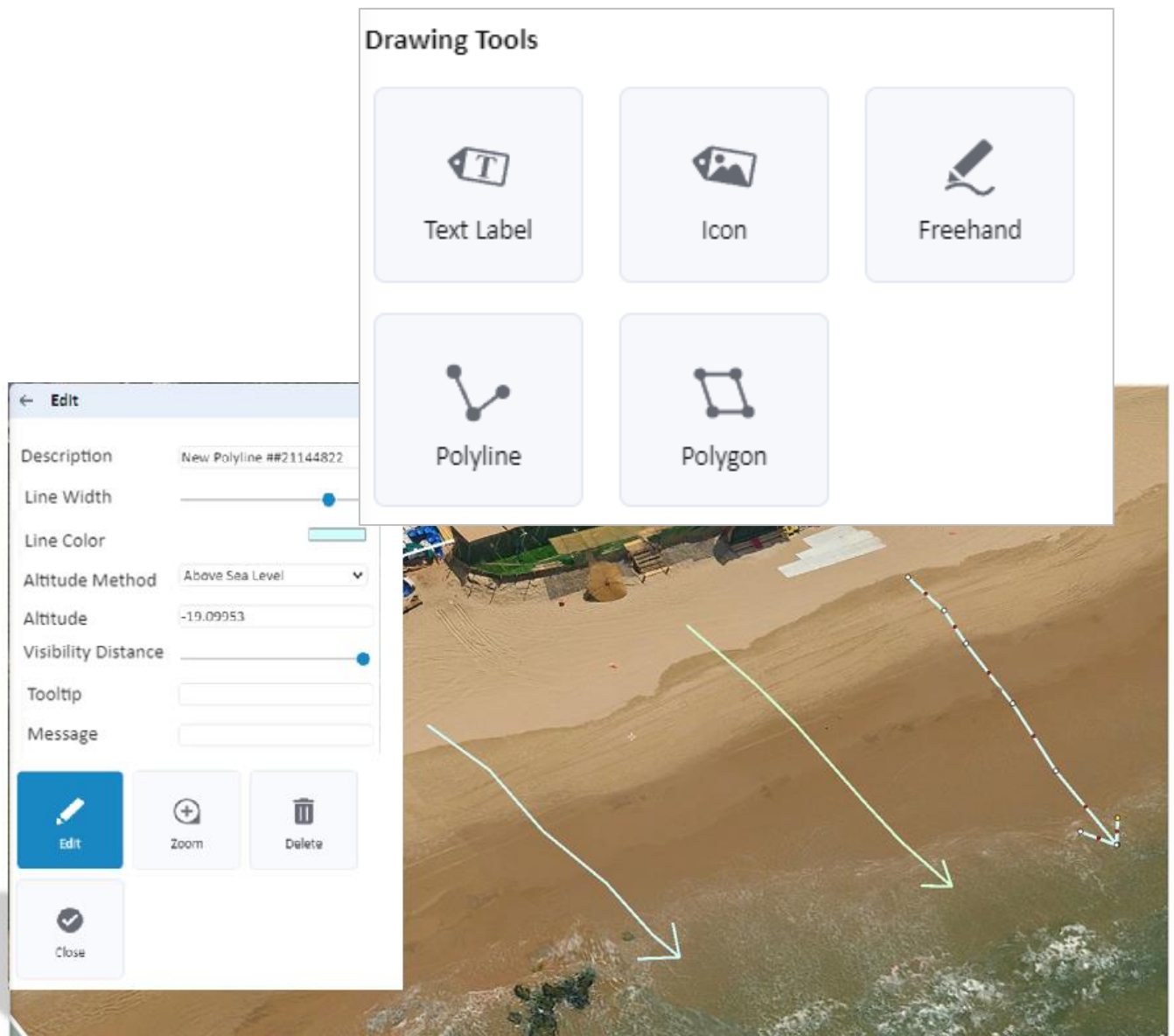
- Line and fill style
- Point cloud styling
- Altitude method
- Tooltip and message
- Use attribute values

Load Layers from SkylineGlobe Server



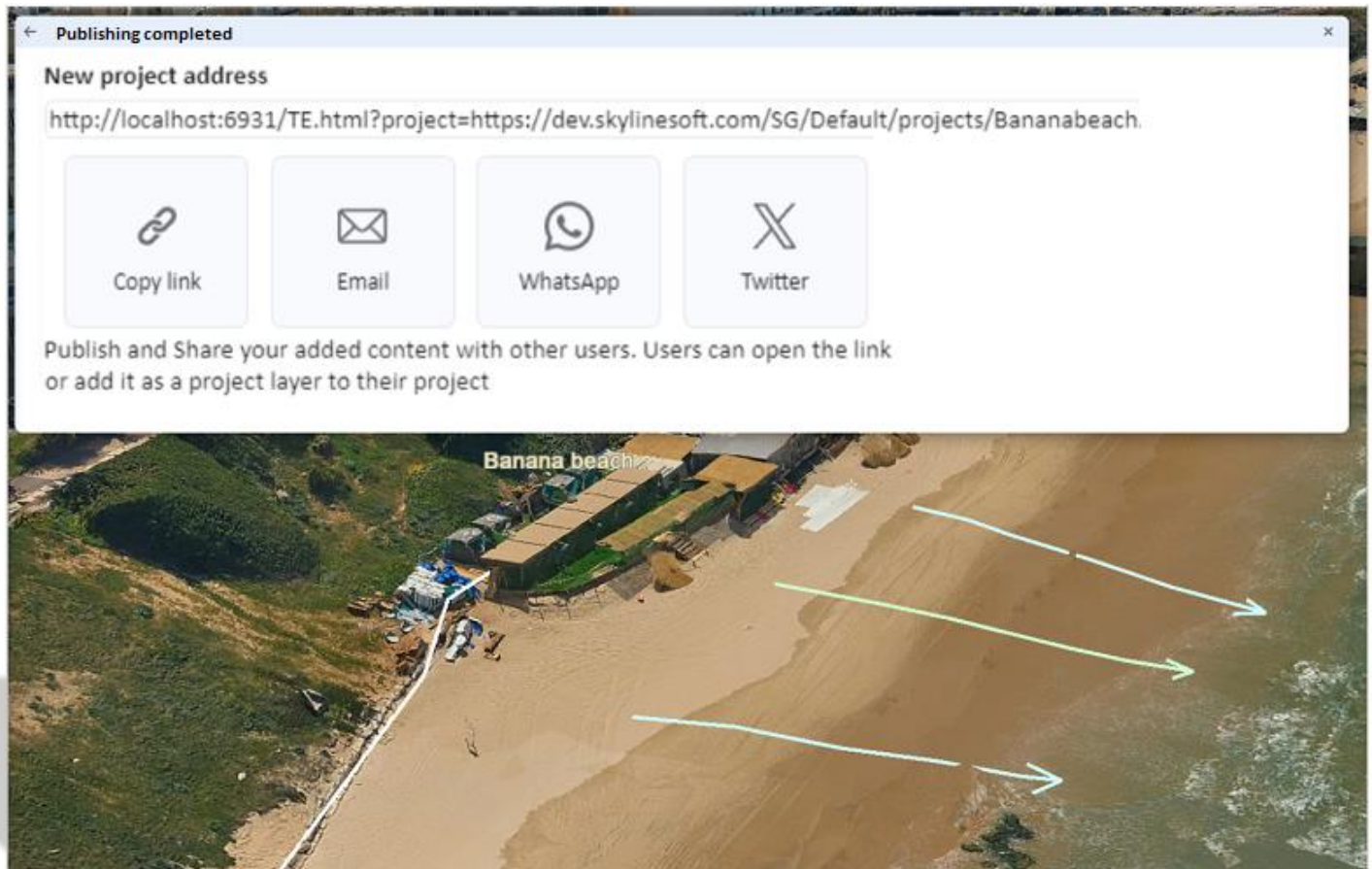
Drawing Tools and Styling Capabilities

TerraExplorer Fusion Plus supports the addition of basic drawing objects to the 3D World: text labels, image labels, icons, as well as polylines, polygons, and freehand lines. A variety of styling options are also supported including line and fill color, altitude options, tooltips and more.



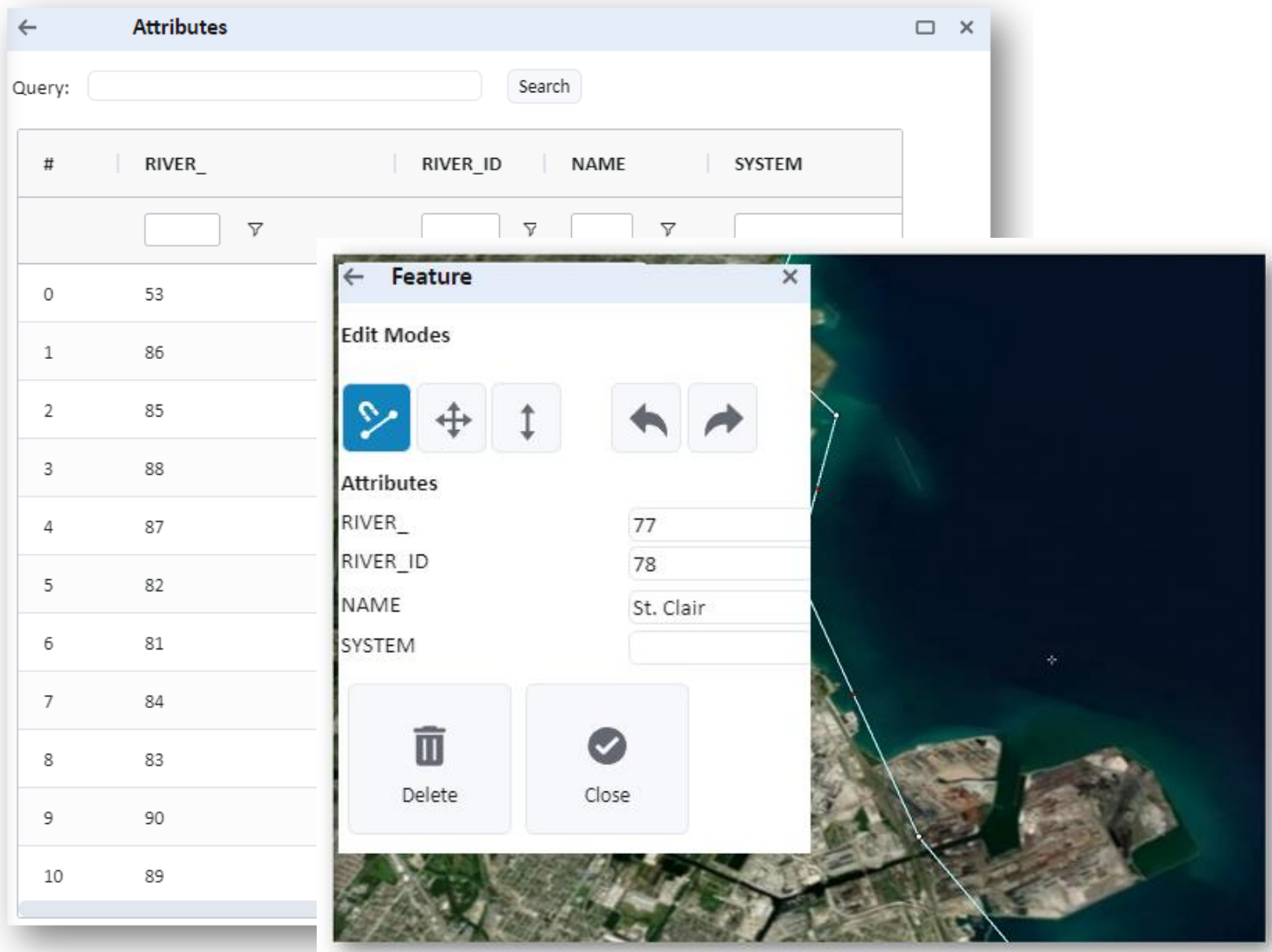
Publish and Share

In TerraExplorer Fusion Plus, users with 'Publisher' level permissions for SkylineGlobe Server can now publish to SGS all contents in their "My Data", including custom locations, measurement objects and layers added to the project. When subsequently loading this published data into TerraExplorer Fusion, users can choose to do so as 'Open base project', combining "My Data" with the original base project, or as an "Open as Layer" option, which loads only the "My Data" section into the existing project.



Feature Editing

Users with edit permissions can add new point, line, and polygon features, and edit their geometry and attribute data. TerraExplorer Fusion Plus supports powerful tools for analyzing and filtering your feature layer data. Features can be selected based on their spatial relationship with a user-drawn polygon, line or point, or alternatively, using the Attribute Table to select features based on their attribute values. Plus, all changes are now saved automatically to streamline the editing process.



The screenshot displays two overlapping windows from the TerraExplorer Fusion Plus software. The background window is the 'Attributes' table, which lists feature data. The foreground window is the 'Feature' editing dialog, which allows users to modify the geometry and attributes of a selected feature.

Attributes Table:

#	RIVER_	RIVER_ID	NAME	SYSTEM
0	53			
1	86			
2	85			
3	88			
4	87			
5	82			
6	81			
7	84			
8	83			
9	90			
10	89			

Feature Editing Dialog:

Edit Modes: Includes icons for drawing a new feature (pencil), moving a feature (four-way arrow), scaling a feature (vertical double arrow), and undo/redo (curved arrows).

Attributes:

RIVER_	77
RIVER_ID	78
NAME	St. Clair
SYSTEM	

Buttons: Delete (trash icon) and Close (checkmark icon).

Google Earth 3D Tiles

TerraExplorer Fusion 8.1 now provides enhanced support for the new Google Earth Photorealistic 3D Tiles service, covering more than 2,500 cities across the globe. You can seamlessly combine your high-resolution PhotoMesh 3D mesh models with the Google Earth background for a comprehensive 3D viewing and analysis experience. Utilize the TerraExplorer 'Load 3D Tiles' option, along with your Google API key, to integrate Google Earth models.



REQUIREMENTS

Supported Browsers	Google Chrome, Microsoft Edge, Mozilla Firefox, Apple Safari
System Memory	8 GB RAM
Video Card	2GB of video memory (4GB or more recommended). For 4K render mode - 4 GB of video memory (8 GB or more recommended).
Processor	4 cores (8 cores recommended).

[Check out our TerraExplorer Fusion knowledge base](#)



www.skylinesoft.com

Copyright © 2024 Skyline Software Systems Inc. All rights reserved. Skyline, SkylineGlobe, the Skyline logo, TerraExplorer Fusion and the TerraExplorer Fusion logo are trademarks of Skyline Software Systems Inc.

